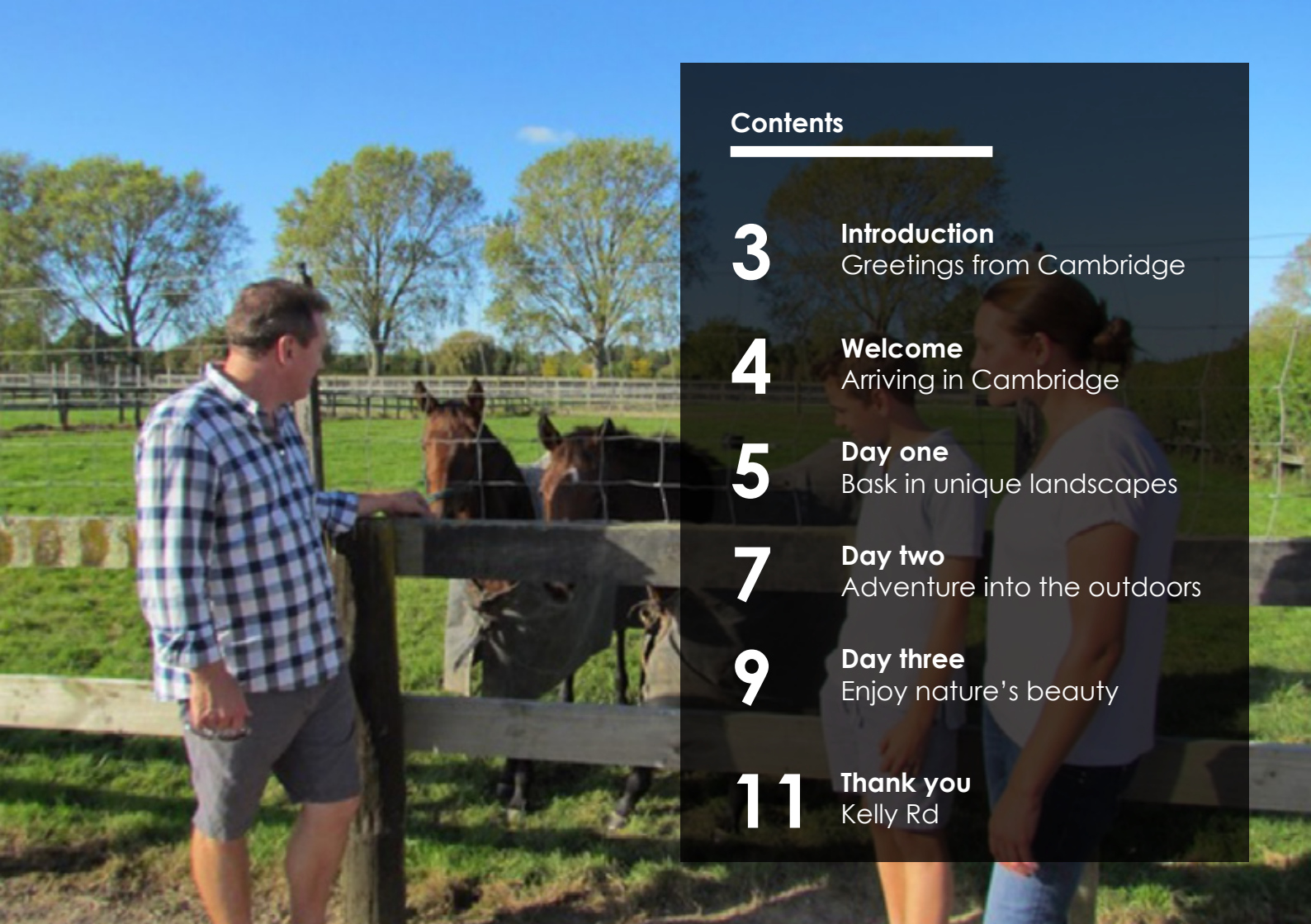




Three-night summer escape

How to plan your days in Cambridge

Kelly Rd
CAMBRIDGE



Contents

3

Introduction

Greetings from Cambridge

4

Welcome

Arriving in Cambridge

5

Day one

Bask in unique landscapes

7

Day two

Adventure into the outdoors

9

Day three

Enjoy nature's beauty

11

Thank you

Kelly Rd

Introduction

Greetings from Cambridge

Cambridge is, quite simply, one of the nicest little towns you'll ever visit. Nestled in the heart of the picturesque Waipa district, it's the perfect place to enjoy a relaxed three-day summer escape.

Not only is Cambridge beautiful, it's also the ideal place to stay to enjoy the Waikato's best attractions. Bike, hike, drink and dine... the roads from Cambridge connect you to it all.

What's more, some of the region's best eateries are hidden away in Cambridge or close by. If good food and drink are high on your summer escape priority list, the town's hospitality scene won't disappoint.

Cambridge is nestled on the banks of the Waikato River, approximately 20 kilometres southeast of Hamilton. It's lovingly known as the town of trees and champions by locals and visitors alike.

Cambridge and nearby Lake Karapiro are home to many of New Zealand's national sports organisations (cycling, mountain biking, rowing), and some of the country's most high profile sports people.

Nearly 20,000 people call Cambridge home, making it the third largest urban area in the Waikato. State Highway 1 connects the town with Hamilton in the northwest and Tauranga, Rotorua and Taupo in the southeast. Hamilton Airport is only a 15 minute drive from Cambridge and a public bus connects Cambridge with central Hamilton.

This guide will help you to discover the delights of Cambridge.

A three-day escape will only be the beginning.

Welcome

Arriving in Cambridge

Afternoon

Arrive in Cambridge and check in. Stroll into town to get your bearings. Explore Cambridge on foot. Start outside the Cambridge Town Hall, opposite Victoria Square, and wander down Victoria Street, Empire Street and Alpha Street. The town offers fantastic shopping, with a unique range of locally made goods.

Cool off at Waipuke Park, Karapiro

If you're feeling the summer heat head out to Waipuke Park at Lake Karapiro and cool off in the fresh water of the Waikato River. Enjoy the green space, safe swimming and kayaking spot, stunning views, playground and picnic facilities.



Waipuke Park, Karapiro

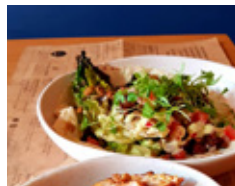
953 Maungatautari Road
Gates open 7am-9pm

Evening

Put aside a few hours for a relaxed dinner, chatting to locals and enjoying the town by night. Make sure you take an extra layer so you can take your time wandering back to your accommodation.


Dinner recommendation: Pony Cantina Loco

Dinner at Pony Cantina Loco will not disappoint with its combination of Mexican, South American & New Wave Asian influenced Street Food. A great atmosphere with top notch service.



Pony Cantina Loco

✉ hello@ponybarprovisions.co.nz
55 Duke St, Cambridge
Open 7 days 11am - late



Day one

Bask in unique landscapes

Morning

Wairere Falls

Start your day next door at Sloth Café, with great coffee and plenty of vegan and gluten free options. Enjoy a wander through the beautiful park across the road.

An easy 45-minute drive from Cambridge is the Wairere Falls Track, featuring the largest waterfall in the North Island, weaving through natural bush, moss covered rocks, large boulders and natural pools.

www.freewalks.nz



Sloth Café

☎ 021 557 245
1907 Cambridge Road,
Cambridge
Open 7am-5pm



Afternoon

Take a trip to the Hobbiton Movie Set

As you head back towards Cambridge after visiting the Wairere falls you can't miss the opportunity to visit Middle Earth at Hobbiton. The Shire at Hobbiton featured in Peter Jackson's The Lord of the Rings and The Hobbit trilogies. The Alexander farm was first spotted by Sir Peter Jackson's team in 1998, who noted the area's striking similarity to The Shire as described by JRR Tolkien.

While there, refuel at the Shire's Rest Café.

Dinner recommendation: Good Union

One of Cambridge's newest watering holes, Good Union is a popular spot for locals and out-of-towners. The Good Union folk are also behind Good George Brewing, Hamilton's own craft beer and cider which is distributed worldwide.



Shire's Rest Cafe

☎ 07 888 1505

501 Buckland Road, Matamata

Open 9am-8.30pm

www.hobbitontours.co.nz



Good Union

☎ 07 834 4040

✉ ask@goodunion.co.nz

98 Victoria St, Cambridge

Open 11am-late

www.goodunion.co.nz

Day two

Adventure into the outdoors

Morning

Camjet - Boat tour

Before hitting the water for a jet boating experience along the mighty Waikato River enjoy breakfast at The Eatery Gourmet Food Collective. Take a quick browse around the adjoining designer homeware store then head out to Camjet to take in the breath-taking scenery and learn about the history of the region. Jet boat tour departs from Riverside Park, less than 1 km from Cambridge town centre.

If you're a thrill seeker opt for the Extreme Jet tour and get all the spins and slides. For those that prefer a slower pace you'll enjoy the Ecological River Cruise. Bookings essential.

www.camjet.co.nz



The Eatery Gourmet Food Collective

 07 827 0471

9 Albert Street, Cambridge

Open Mon-Sat 8.30am-4pm

Sun 9.30-3pm

[Find us on Facebook](#)



Afternoon

Waikato Thoroughbred Stud Tours

Discover some of New Zealand's finest thoroughbred horse studs and training establishments. Your tour will be personally tailored to your specific requirements and can be to one or all of the studs and can also take in training establishments including the Cambridge Training Track, the largest training centre in New Zealand, catering for approximately 1000 horses each morning.

www.nzoutdoorexperiences.co.nz

☎ 07 856 4611 | 022 600 5783

✉ pete@nzoutdoorexperiences.co.nz

Eat

Lunch recommendation: The Lily Pad Cafe

Enjoy the delicious food, excellent coffee and terrific service. Take time to wander around the wonderful Garden Art studio and enjoy the relaxing, family friendly environment.

Dinner recommendation: St Kilda Cafe & Bistro

Family friendly dining in a beautiful setting - enjoy your wine in the lovely outdoor setting whilst keeping an eye on the kids at the adjacent outdoor playground.



The Lily Pad Cafe

☎ 07 823 9134

✉ manager@thelilypadcafe.co.nz

1234 Kaipaki Rd, RD3, Cambridge

Mon closed, Tue-Fri 9am-3.30pm,

Sat-Sun 8am-4pm

www.thelilypadcafe.co.nz



St Kilda Cafe & Bistro

☎ 07 827 3993

19 Kaniera Terrace, Cambridge

Open Mon-Tues 8am-4pm,

Weds-Sun 8am-9pm

www.stkildabistro.co.nz

Day 3

Enjoy nature's beauty

Morning

Alphra Lavender

An easy 30-minute drive from Cambridge you'll find the Alphra Lavender farm on the outskirts of Kihikihi.

On your way stop at the Red Cherry Roasters & Co cafe for breakfast then head on out to the lavender fields which are a stunning sight during summer as they come in to full bloom – a popular scene for keen photographers. Open only on weekends be sure to check their website for opening times and dates. www.alphralavender.co.nz

If that wasn't enough natural beauty for you continue down State Highway 3 to the Waitomo Glowworm Caves and be blown away by the glittering underground worlds. www.waitomo.com



Red Cherry Roasters & Co

☎ 07 823 1515

✉ redcherrycoffee@xtra.co.nz

7 Forrest Road, Cambridge

Mon - Fri 7.30am-3.30pm

Sat 7.20am-4pm, Sun 8.30am-4pm

www.redcherryroasters.co.nz



Afternoon

Boatshed Kayaks

Based on the edge of Lake Karapiro is The Boatshed Kayaks who have a wide range of hire options and tours available. Enjoy a guided paddle board tour to beautiful waterfalls or a kayaking trip to see glow worms. Check out their website and make a booking before you go.

www.theboatshedkayaks.net.nz

Finish your day off by indulging in the delicious food and coffee at Alpha St Kitchen while reflecting on all that you have discovered and enjoyed during your stay at Kelly Rd.



Alpha Street Kitchen

☎ 07 827 5596

✉ hello@alphast.co.nz

47 Alpha Street, Cambridge Open 7 days 11am-late

www.alphast.co.nz



Thank you for
reading through
our guide, we
look forward to
welcoming you
to Cambridge.



Book your stay at Kelly Rd

Kelly Rd

CAMBRIDGE

Cambridge boasts charm, character and plenty of attractions – a three-day escape will be only the beginning of a long love affair with this beautiful and quintessentially English town in the heart of the North Island.

Whether exploring on foot, two wheels, or by car, the township boasts a wonderful community feel and a welcoming vibe to all who pass through or stay and visit.

To complete your summer escape in Cambridge, enjoy the hospitality of Kelly Rd, the town's newest accommodation. Relaxed, modern and contemporary, Kelly Rd is in walking distance to all of Cambridge's sites and attractions.

After a day exploring and an enjoyable evening meal, relax and unwind at Kelly Rd, your home away from home.

Kelly Rd

☎ 07 282 0578

✉ stay@kellyrd.co.nz

1 Kelly Rd, Cambridge,
Waikato, New Zealand 3434

www.kellyrd.co.nz